

PART OF THE S.E. 1/4 OF
SECTION 17, T.6N., R.1W., S.L.B.&M.

79-1

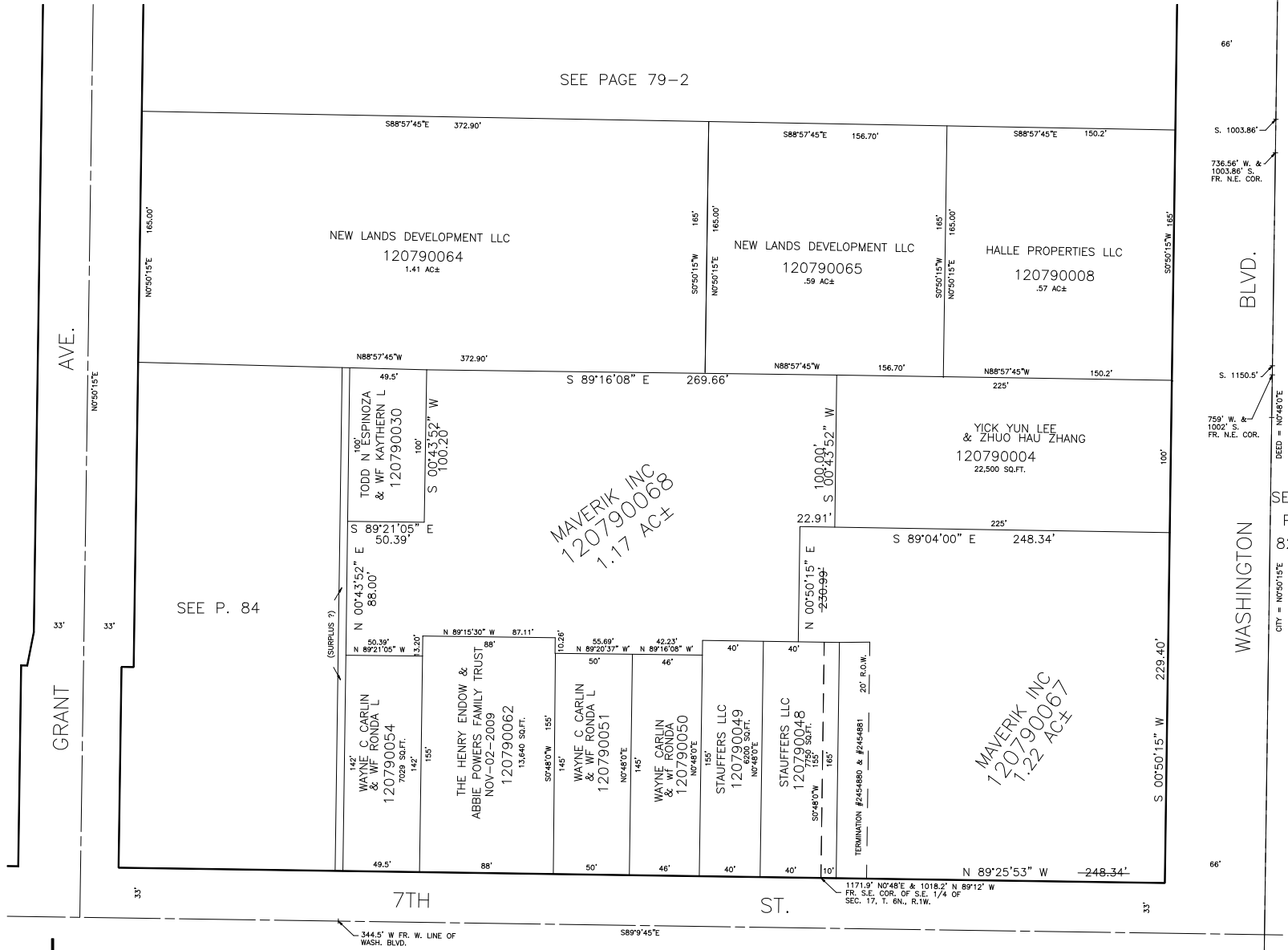
TAXING UNIT: 25

IN OGDEN CITY
SCALE 1" = 50'

ALSO SEE P. 79-2

730.8' N88°57'30"W & 839.30'
50'48" W FR. N.E. COR. OF S.E. 1/4

SEE PAGE 79-2



AVE.

GRANT

BLVD.

WASHINGTON

7TH

ST.

SEE P. 84

MAVERIK INC
120790068
1.17 AC±

MAVERIK INC
120790067
1.22 AC±

SEE
P.
82

344.5' W FR. W. LINE OF
WASH. BLVD.

SEE PAGE 83